

WORKERS' COMPENSATION RESOURCES RESEARCH REPORT

In This Issue:

FEATURED TOPICS

Summary of the Contents.... 1

Workers' Compensation Incurred Benefits: 1985-2007..... 3

Appendix A: Data Sources, Terminology, and Methodology..... 21

Appendix B: Table 1.1985 through Table 1.2006..... 25

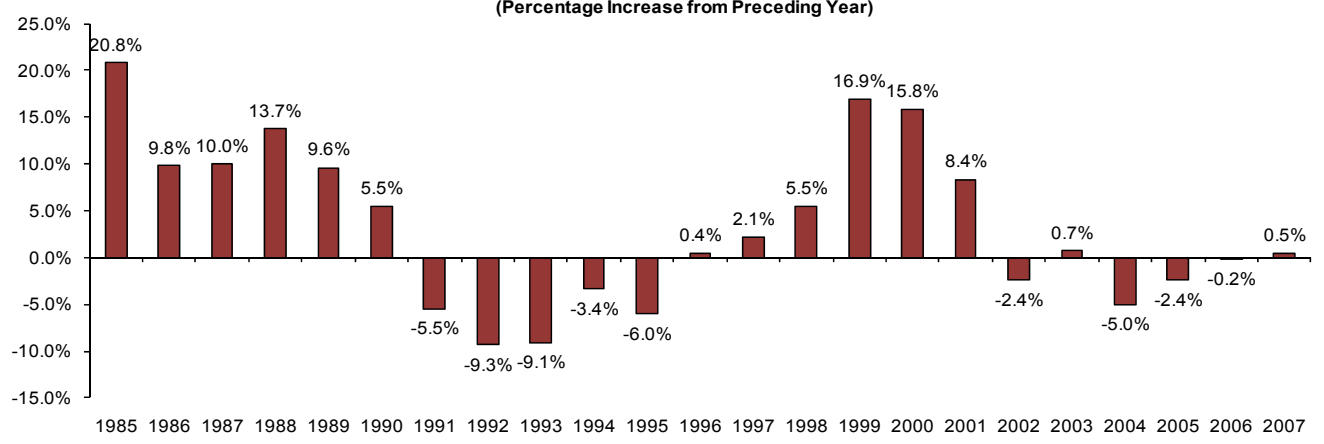
Summary of the Contents

Issue 3 of the *Workers' Compensation Resources Research Report (WCRRR)* provides 23 years of information on cash benefits, medical benefits, and total (cash plus medical) benefits per 100,000 workers for up to 47 jurisdictions each year using the most recent data from the National Council on Compensation Insurance and other sources. Workers' compensation benefits per 100,000 workers vary significantly nationally over time as well as among jurisdictions in a particular year.

Figure A provides an historical record of changes in the national averages of total benefits per 100,000 workers for the same 42 jurisdictions between 1985 and 2007. There were substantial fluctuations over time. Benefits increased by over five percent in every year from 1985 to 1990 and then declined in every year from 1991 to 1995. Benefits were relatively tranquil in 1996 and 1997 and then increased by over five percent a year from 1998 to 2001. In the most recent six years (2002 to 2007), total benefits per 100,000 workers increased by less than one percent in two years and declined in the other four years.

Issue 3 of the WCRRR provides, in addition to the national data, information on cash benefits, medical benefits, and total benefits per 100,000 workers for up to 47 jurisdictions for each of the 23 years. There typically are wide differences among jurisdictions in the generosity of benefits. In 2007, for example, total benefits per 100,000 workers were more than fifty percent about the national average in five states and more than fifty percent below the national average in the District of Columbia. Over the 23 years, the differences among states have narrowed for cash benefits, medical benefits, and total benefits, although the differences among states in medical benefits have increased since 1998.

Figure A
Changes in Total (Cash plus Medical) Benefits per 100,000 Workers
(Percentage Increase from Preceding Year)



Source: Table 2, Panel B.

The Workers' Compensation Resources Research Report

The **Workers' Compensation Resources Research Report (WCRRR)** is published several times a year. Each issue of the **WCRRR** focuses on a single topic, and the issue presents data and analysis not readily available elsewhere that are valuable for administrators, policymakers, practitioners, researchers, and other interested in workers' compensation.

The Editor of the **WCRRR** is John F. Burton, Jr. Burton is Professor Emeritus in the School of Management and Labor Relations (SMLR) at Rutgers University. Burton previously served as Dean of SMLR, as a faculty member at Cornell University, where he is also an Emeritus Professor, and at the University of Chicago. He graduated from Cornell University with a B.S. in Industrial and Labor Relations. He received a law degree and a Ph.D. in Economics from the University of Michigan. Burton is Chair of the Workers' Compensation Data Study Panel of the National Academy of Social Insurance (NASI) and is the co-author (with Ishita Sengupta and Virginia Reno) of *Workers' Compensation: Benefits, Coverage, and Costs, 2009*, which will be published by NASI in August 2011. He is the author or co-author of several other articles and books, including the chapter on "Workers' Compensation" in *The Handbook of Employee Benefits: Seventh Edition*, edited by Jerry Rosenbloom and published by McGraw Hill in 2011. He was a Senior Staff Economist at the Council of Economic Advisers in 1967-68. He was the Chairman of the National Commission on State Workmen's Compensation Laws, which submitted its report to the President and Congress in 1972. Burton was President of the Industrial Relations Research Association (now the Labor and Employment Relations Association) in 2002. He is a Fellow of the American Bar Association's College of Workers' Compensation Lawyers.

Summary of the Contents of Issue 1 of the WCRRR

Issue One of the **WCRRR**, published in September 2010, presents a report entitled "Workers' Compensation Insurance Industry Remains Profitable in 2009." The article indicated the workers' compensation insurance industry remained profitable for the seventh year in a row. This issue can be downloaded without charge from www.workerscompresources.com.

Summary of the Contents of Issue 2 of the WCRRR

Issue Two of the **WCRRR**, published in May 2011, contains a report on "Workers' Compensation Costs for Employers" based on the latest data from the Bureau of Labor Statistics. Workers' compensation costs for private sector employers declined in 2010 for the fifth year in a row.

Summary of the Contents of Issue 3 of the WCRRR

Issue Three of the **WCRRR**, published in August 2011, contains a report on "Workers' Compensation Incurred Benefits: 1985-2007" based on the latest available data. The national averages of workers' compensation benefits have been relatively stable in recent years, but there are substantial differences among jurisdictions in cash, medical, and total benefits.

The Website: www.workerscompresources.com

John Burton's Workers' Compensation Resources currently provides two services for workers' compensation aficionados. The first is the publication of the **Workers' Compensation Resources Research Report**. The second is a website: www.workerscompresources.com. Access to all items on the website is currently free.